



## THE wilson 204

The perfect solution for down-sizers.

This clever design is perfect for those looking for less bedrooms, but still want the luxury of an additional living space. Upon entry you'll find the master bedroom with spacious walk-in robe and two-way bathroom which is shared with bedroom two. All the living is done in the rear of this home with a large kitchen with walk-in pantry and open-living space that accesses the patio. You can even relax and catch a movie in the media room. This design has everything you need in a tidy 204m<sup>2</sup> package.

### EXPLORE OUR LIVEABILITY RANGE.

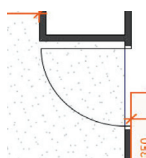
Whether changes in your household come unexpectedly or simply as life progresses, any new home may need to accommodate the ever-changing needs of its residents. Our Livability Range has been designed with these changes in mind, making life easier for occupants with injuries, seniors and families living with disabilities.

### HOW IS THIS RANGE DIFFERENT?

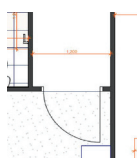
Depending on the design you choose, these are some of the key differences in this range including:



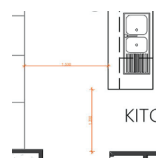
Home entry is wider



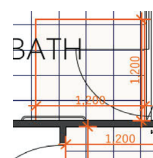
Internal doors are min 870mm wide



Hallways are min 1200mm wide



Increased clear space where you need it



Walls reinforced for future handrails



And more!

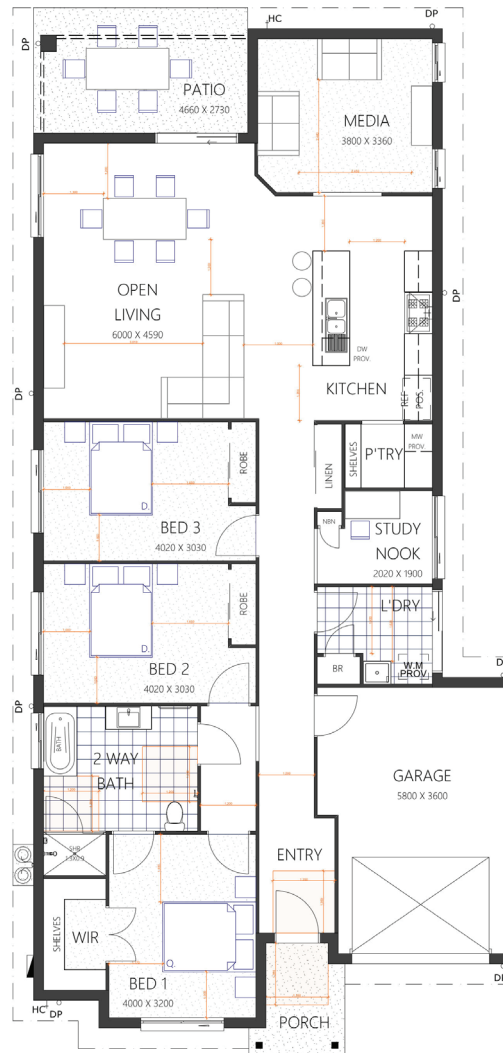
**(07) 3886 4449**

info@keibuildhomes.com.au  
www.keibuildhomes.com.au

# THE WILSON 204

HOUSE SIZE (W x D): 11.05m x 23.45m  
SUITABLE FOR BLOCK SIZES:  
MIN LOT WIDTH: 12.80m  
MIN LOT DEPTH: 30.85m

LIVEABILITY PLAN WITH THE TRADITIONAL FAÇADE



## ROOM SIZES

Master Bedroom	4.0 x 3.2m	Open Living	6.18m x 4.59m
Bedroom 2	4.02 x 3.03m	Media Room	3.8 x 3.36m
Bedroom 3	4.02 x 3.03m	Patio	4.66 x 2.7m
Study	2.02 x 1.9m	Garage	5.8 x 3.6m

## SPECIFICATIONS

Living	161.6m <sup>2</sup>	17.4sq
Porch	4.3m <sup>2</sup>	0.5sq
Patio	12.8m <sup>2</sup>	1.4sq
Garage	25.3m <sup>2</sup>	2.7sq
<b>Total</b>	<b>204.0m<sup>2</sup></b>	<b>22.0sq</b>

## KEY FEATURES:

- 920mm entry + 870mm internal doors throughout
- 1200mm wide hallways
- Increased clear space in bathrooms & WC
- Bigger bedrooms (for 1000mm pathway)
- Reinforcement for future handrails in bathrooms & WC

(07) 3886 4449

info@keibuildhomes.com.au  
www.keibuildhomes.com.au



Dimensions shown are for the Traditional Façade. This document should only be used as a guide. Refer to working drawings for detailed specifications. Block sizes may vary depending on estate and council regulations. This floor plan is owned by Keibuild Homes and cannot be reproduced either wholly or in part, in any form. © Keibuild Homes 2020.