



THE *oxley* 309

Rediscover that feeling of home.

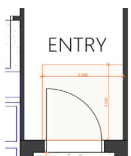
This design features a traditional Australian verandah, providing wonderful street appeal from the moment you arrive. Entering the home you'll find a generous entryway that captures the vista right through to the backyard. This home boasts 4 bedrooms, a study, kids retreat, media room and large open plan living space, providing multiple spaces throughout the home for everyone to have their own sanctuary to retreat to.

EXPLORE OUR LIVEABILITY RANGE.

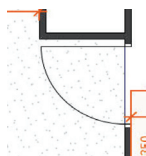
Whether changes in your household come unexpectedly or simply as life progresses, any new home may need to accommodate the ever-changing needs of its residents. Our Livability Range has been designed with these changes in mind, making life easier for occupants with injuries, seniors and families living with disabilities.

HOW IS THIS RANGE DIFFERENT?

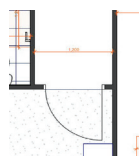
Depending on the design you choose, these are some of the key differences in this range including:



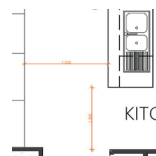
Home entry is wider



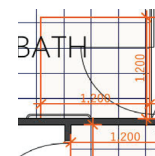
Internal doors are min 870mm wide



Hallways are min 1200mm wide



Increased clear space where you need it



Walls reinforced for future handrails



And more!

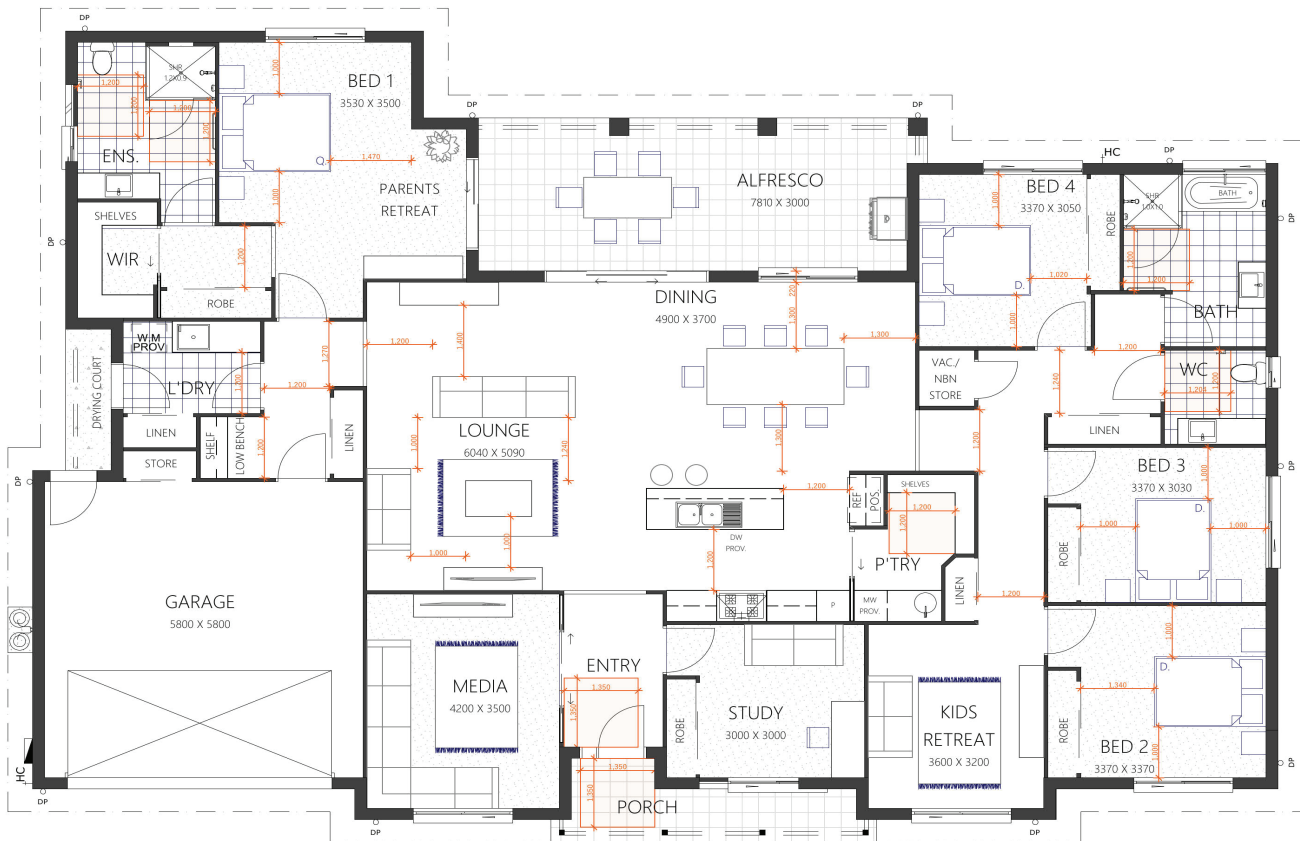
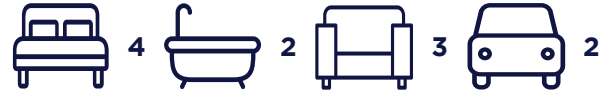
(07) 3886 4449

info@keibuildhomes.com.au
www.keibuildhomes.com.au

THE OXLEY 309

HOUSE SIZE (W x D): 23.58m x 16.35m
 SUITABLE FOR BLOCK SIZES:
 MIN LOT WIDTH: 26.58m
 MIN LOT DEPTH: 23.85m

LIVEABILITY PLAN WITH THE TRADITIONAL FAÇADE



ROOM SIZES

Master Bedroom	3.53 x 3.5m	Family	6.04 x 5.09m
Bedroom 2	3.37 x 3.37m	Dining	4.9 x 3.7m
Bedroom 3	3.37 x 3.03m	Study	3.0 x 3.0m
Bedroom 4	3.37 x 3.05m	Alfresco	7.81 x 3.0m
Media Room	4.2 x 3.5m	Garage	5.8 x 5.8m

SPECIFICATIONS

Living	239.8m ²	25.8sq
Porch	6.7m ²	0.8sq
Alfresco	23.7m ²	2.5sq
Garage	37.3m ²	4.0sq
Total	309.8m²	33.3sq

KEY DIFFERENCES:

- 920mm entry + 870mm internal doors throughout
- 1200mm hallways
- Increased clear space in bathrooms & WC
- Bigger bedrooms (for 1000mm pathway)
- Reinforcement for future handrails in bathrooms & WC

(07) 3886 4449

info@keibuildhomes.com.au
 www.keibuildhomes.com.au

