



THE *santel* 154

Our brilliantly designed compact family home.

This entry-level design is a great option for those looking to get into the market or to downsize. Perfectly sized to fit a smaller lot without compromising on a quality standard of living, this home features 4 bedrooms, 2 bathrooms, internal laundry and a double car garage. The kitchen is the central hub of the home with a long island bench and spacious pantry. The open living space is situated towards the rear of the home and even opens up to the patio—making it a true extension of your living room. If you're looking for a home that delivers it all within a tidy budget, the Santel is could be the home for you!

FAÇADE OPTIONS



TRADITIONAL



HERITAGE

(07) 3886 4449

info@keibuildhomes.com.au

www.keibuildhomes.com.au

THE

SANTEL 154

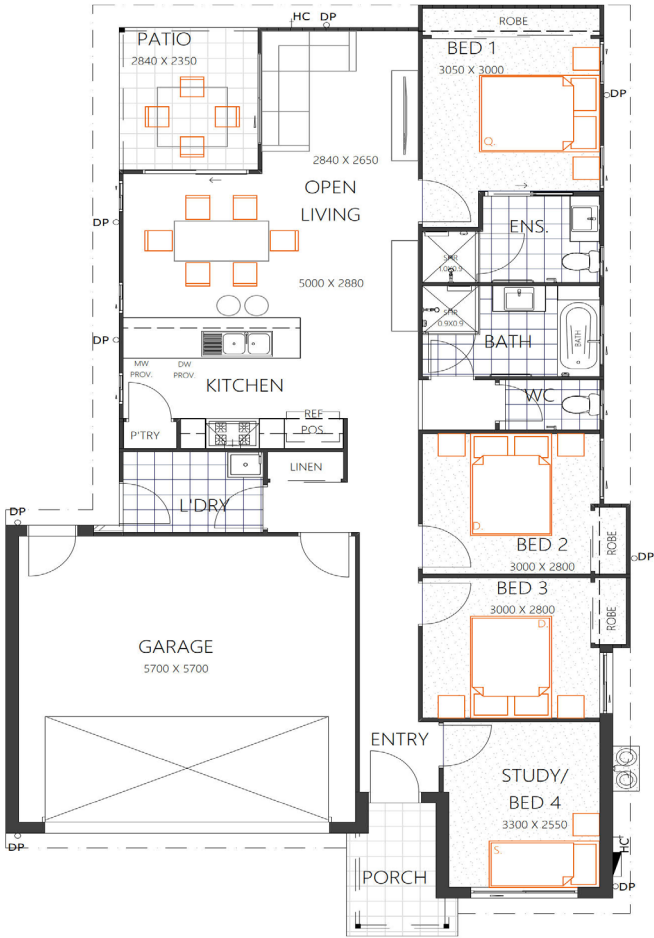
HOUSE SIZE (W x D): 10.580m x 18.55m

SUITABLE FOR BLOCK SIZES:

MIN LOT WIDTH: 12.330m

MIN LOT DEPTH: 26.050m

STANDARD FLOOR PLAN WITH THE TRADITIONAL FAÇADE



ROOM SIZES				SPECIFICATIONS			DESIGN OPTIONS
Master Bedroom	3.05 x 3.0m	Lounge	2.84 x 2.65m	Living	107.0m ²	11.5sq	<ul style="list-style-type: none">• Standard Floor Plan• Two-Way Bath• 3 Bedrooms with Rumpus• Expanded Open Living• Bed 2 & Bath Swap
Bedroom 2	3.0 x 2.8m	Dining	5.0 x 2.88m	Porch	4.1m ²	0.4sq	
Bedroom 3	3.0 x 2.8m	Patio	2.84 x 2.35m	Patio	6.7m ²	0.7sq	
Bedroom 4	3.3 x 2.55m	Garage	5.7 x 5.7m	Garage	36.3m ²	4.0sq	
				Total	154.1m ²	16.6sq	

(07) 3886 4449

info@keibuildhomes.com.au

www.keibuildhomes.com.au



Dimensions shown are for the Traditional Façade. This document should only be used as a guide. Refer to working drawings for detailed specifications. Block sizes may vary depending on estate and council regulations. This floor plan is owned by Keibuild Homes and cannot be reproduced either wholly or in part, in any form. © Keibuild Homes 2020.