



## THE *santel* 164

Our brilliantly designed compact family home.

This entry-level design is a great option for those looking to get into the market or to downsize. Perfectly sized to fit a smaller lot without compromising on a quality standard of living, this home features 4 bedrooms, 2 bathrooms, internal laundry and a double car garage. The kitchen is the central hub of the home with a long island bench and spacious pantry. The open living space is situated towards the rear of the home and even opens up to the patio—making it a true extension of your living room. If you're looking for a home that delivers it all within a tidy budget, the Santel is could be the home for you!

## FAÇADE OPTIONS



TRADITIONAL



HERITAGE

**(07) 3886 4449**

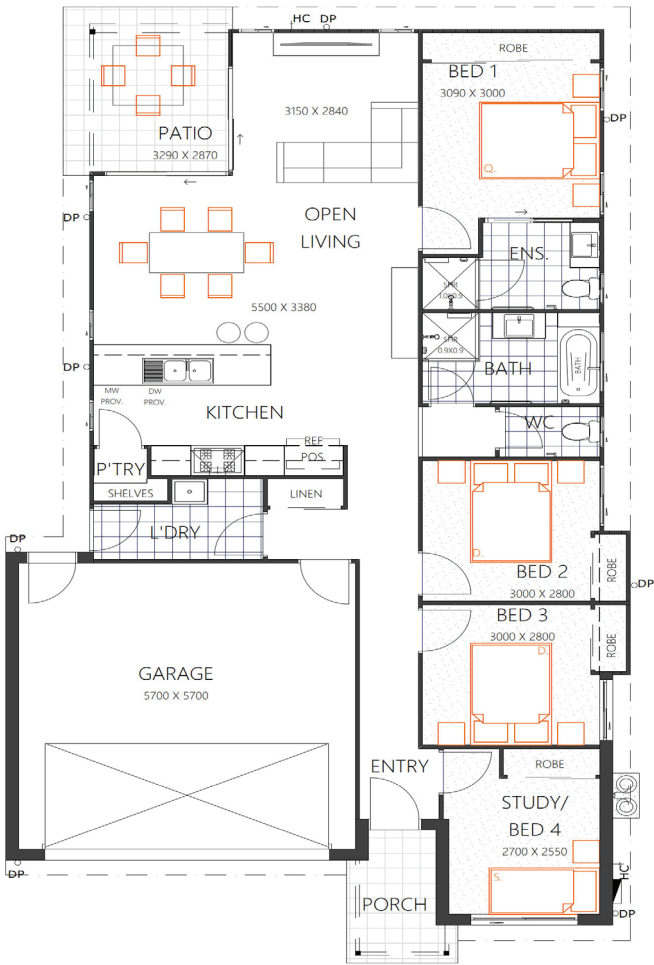
[info@keibuildhomes.com.au](mailto:info@keibuildhomes.com.au)

[www.keibuildhomes.com.au](http://www.keibuildhomes.com.au)

THE  
SANTEL 164

HOUSE SIZE (W x D): 10.58m x 19.050m  
SUITABLE FOR BLOCK SIZES:  
MIN LOT WIDTH: 12.33m  
MIN LOT DEPTH: 26.55m

STANDARD FLOOR PLAN WITH THE TRADITIONAL FAÇADE



ROOM SIZES				SPECIFICATIONS			DESIGN OPTIONS
Master Bedroom	3.09 x 3.0m	Living	3.15 x 2.84m	Living	115.0m <sup>2</sup>	12.4sq	<ul style="list-style-type: none"><li>• Standard Floor Plan</li><li>• Two-Way Bath</li><li>• 3 Bedrooms with Rumpus</li><li>• Expanded Open Living</li><li>• Bed 2 &amp; Bath Swap</li></ul>
Bedroom 2	3.0 x 2.8m	Dining	5.5 x 3.38m	Porch	4.0m <sup>2</sup>	0.4sq	
Bedroom 3	3.0 x 2.8m	Patio	3.29 x 2.87m	Patio	9.3m <sup>2</sup>	1.0sq	
Bedroom 4	2.7 x 2.55m	Garage	5.7 x 5.7m	Garage	36.2m <sup>2</sup>	3.9sq	
				Total	164.5m <sup>2</sup>	17.7sq	

(07) 3886 4449  
info@keibuildhomes.com.au  
www.keibuildhomes.com.au



Dimensions shown are for the Traditional Façade. This document should only be used as a guide. Refer to working drawings for detailed specifications. Block sizes may vary depending on estate and council regulations. This floor plan is owned by Keibuild Homes and cannot be reproduced either wholly or in part, in any form. © Keibuild Homes 2020.