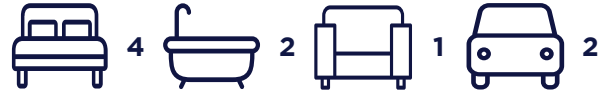
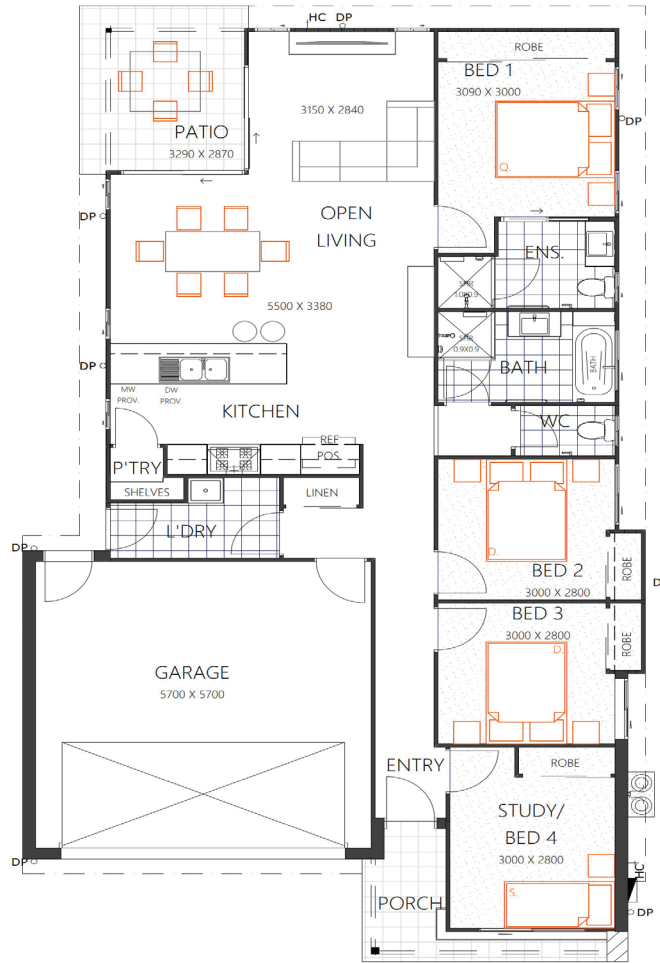


# THE SANTEL 164

HOUSE SIZE (W x D): 10.58m x 19.050m  
 SUITABLE FOR BLOCK SIZES:  
 MIN LOT WIDTH: 12.33m  
 MIN LOT DEPTH: 26.55m



STANDARD FLOOR PLAN WITH THE COASTAL FAÇADE



## ROOM SIZES

|                |             |        |              |
|----------------|-------------|--------|--------------|
| Master Bedroom | 3.09 x 3.0m | Living | 3.15 x 2.84m |
| Bedroom 2      | 3.0 x 2.8m  | Dining | 5.5 x 3.43m  |
| Bedroom 3      | 3.0 x 2.8m  | Patio  | 3.29 x 2.92m |
| Bedroom 4      | 2.7 x 2.55m | Garage | 5.7 x 5.7m   |

## SPECIFICATIONS

|              |                           |               |
|--------------|---------------------------|---------------|
| Living       | 116.2m <sup>2</sup>       | 12.5sq        |
| Porch        | 5.0m <sup>2</sup>         | 0.5sq         |
| Patio        | 9.3m <sup>2</sup>         | 1.0sq         |
| Garage       | 36.2m <sup>2</sup>        | 3.9sq         |
| <b>Total</b> | <b>166.7m<sup>2</sup></b> | <b>17.9sq</b> |

## DESIGN OPTIONS

- Standard Floor Plan
- Two-Way Bath
- 3 Bedrooms with Rumpus
- Expanded Open Living
- Bed 2 & Bath Swap

**(07) 3886 4449**

info@keibuildhomes.com.au  
 www.keibuildhomes.com.au

