



THE *carrington* 296

Our Premier Double Storey Design.

Take in the views (and a little bit of luxury) from the deck on our Carrington 296. As you enter the home, you'll find a study, two bedrooms, bathroom, laundry and rumpus that opens out to a large patio. Upstairs, you'll enter an exquisite Master Suite that features it's own balcony, ensuite with his and her sinks and huge walk-in-robe. There's even space to relax with your morning coffee. Towards the rear of level one is another bedroom and bathroom that leads to a spacious open living room, kitchen with large island bench and walk-in pantry. Prefer your living downstairs? We have a design option to suit, making this home the perfect solution for all lifestyles.

FAÇADE OPTIONS



COASTAL



HERITAGE

(07) 3886 4449

info@keibuildhomes.com.au

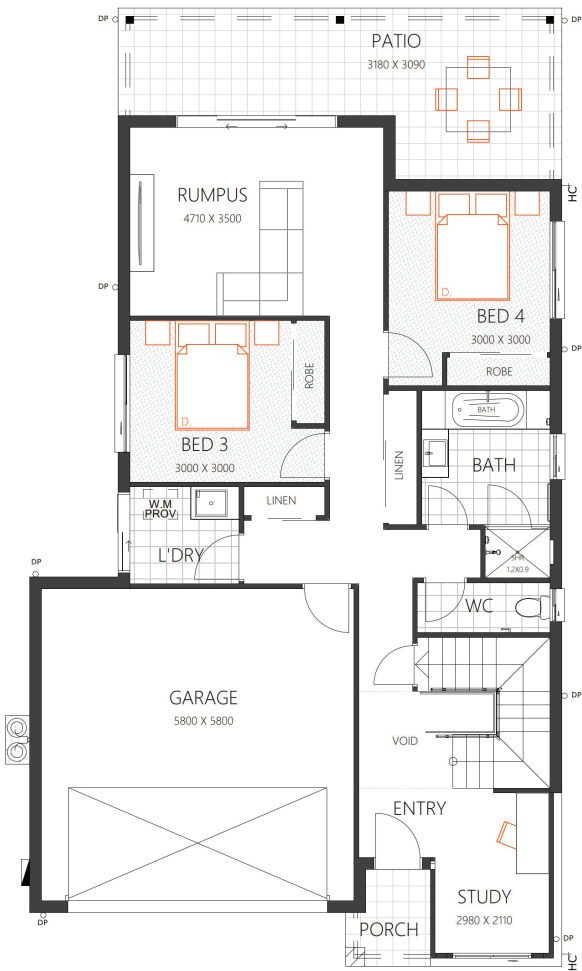
www.keibuildhomes.com.au

THE

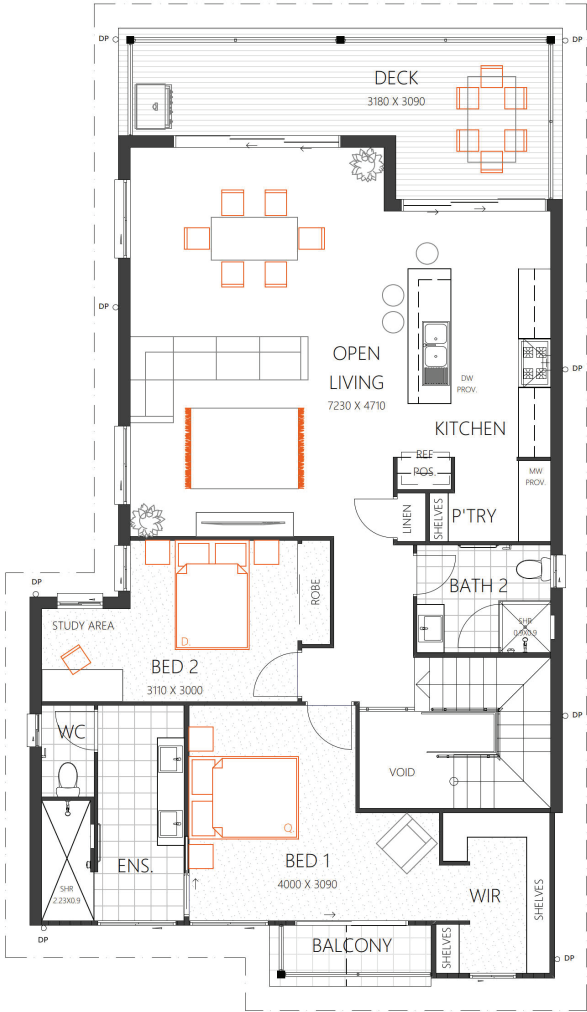
CARRINGTON 296

HOUSE SIZE (W x D): 10.78m x 18.71m
SUITABLE FOR BLOCK SIZES:
MIN LOT WIDTH: 13.78m
MIN LOT DEPTH: 26.21m

STANDARD FLOOR PLAN WITH THE TRADITIONAL FAÇADE



GROUND FLOOR



FIRST FLOOR

ROOM SIZES				SPECIFICATIONS			DESIGN OPTIONS
Master Bedroom	4.0 x 3.09m	Open Living	7.23 x 4.71m	Total Living	212.8m²	12.9sq	<ul style="list-style-type: none">• Standard Floor Plan• Living Area Swap• Rumpus Swap• Level Swap - Living Downstairs
Bedroom 2	3.11 x 3.0m	Rumpus	4.71 x 3.5m	Patio	20.1m²	2.2sq	
Bedroom 3	3.0 x 3.0m	Patio	3.18 x 3.09m	Deck	20.1m²	2.2sq	
Bedroom 4	3.0 x 3.0m	Deck	3.18 x 3.09m	Garage	38.3m²	4.1sq	
Study	2.98 x 2.11m	Garage	5.8 x 5.8m	Total	296.6m²	31.9sq	

(07) 3886 4449
info@keibuildhomes.com.au
www.keibuildhomes.com.au



Dimensions shown are for the Traditional Façade. This document should only be used as a guide. Refer to working drawings for detailed specifications. Block sizes may vary depending on estate and council regulations. This floor plan is owned by Keibuild Homes and cannot be reproduced either wholly or in part, in any form. © Keibuild Homes 2019. QBCC Licence Number 15126405.