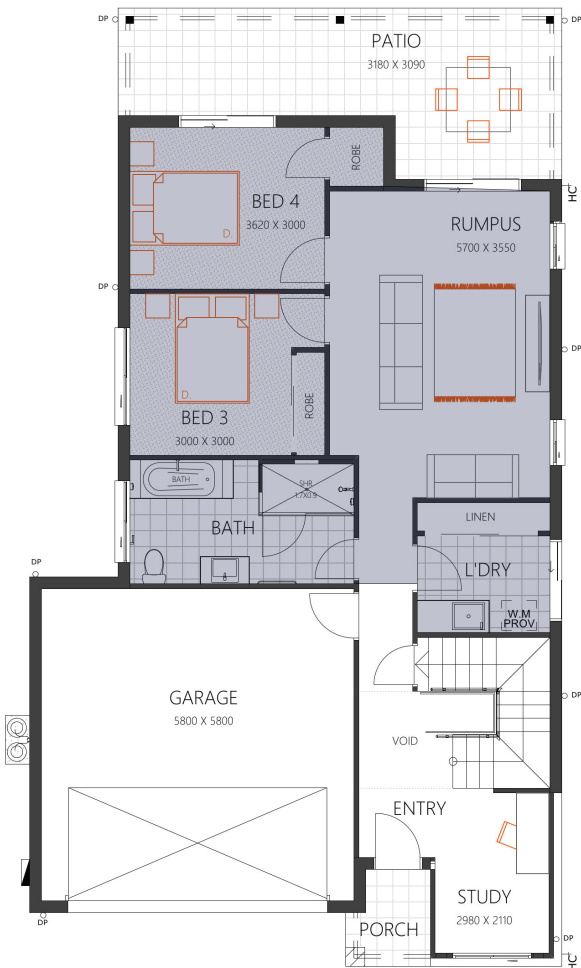


THE

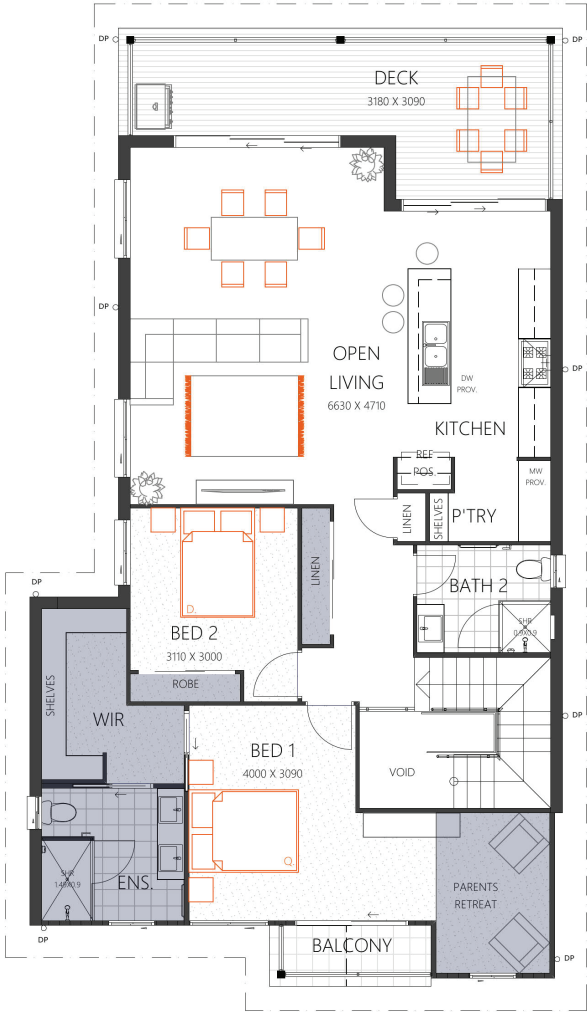
# CARRINGTON 296

HOUSE SIZE (W x D): 10.78m x 18.71m  
SUITABLE FOR BLOCK SIZES:  
MIN LOT WIDTH: 13.78m  
MIN LOT DEPTH: 26.21m

ALTERNATE OPTION WITH RUMPUS SWAP  
WITH THE TRADITIONAL FAÇADE



GROUND FLOOR



FIRST FLOOR

ROOM SIZES				SPECIFICATIONS			DESIGN OPTIONS
Master Bedroom	4.0 x 3.09m	Open Living	6.63 x 4.71m	Total Living	212.8m²	12.9sq	<ul style="list-style-type: none"><li>• Standard Floor Plan</li><li>• Living Area Swap</li><li>• Rumpus Swap</li><li>• Level Swap - Living Downstairs</li></ul>
Bedroom 2	3.11 x 3.0m	Rumpus	5.7 x 3.55m	Patio	20.1m²	2.2sq	
Bedroom 3	3.0 x 3.0m	Patio	3.18 x 3.09m	Deck	20.1m²	2.2sq	
Bedroom 4	3.62 x 3.0m	Deck	3.18 x 3.09m	Garage	38.3m²	4.1sq	
Study	2.98 x 2.11m	Garage	5.8 x 5.8m	Total	296.6m²	31.9sq	

(07) 3886 4449  
info@keibuildhomes.com.au  
www.keibuildhomes.com.au



Dimensions shown are for the Traditional Façade. This document should only be used as a guide. Refer to working drawings for detailed specifications. Block sizes may vary depending on estate and council regulations. This floor plan is owned by Keibuild Homes and cannot be reproduced either wholly or in part, in any form. © Keibuild Homes 2019. QBCC Licence Number 15126405.