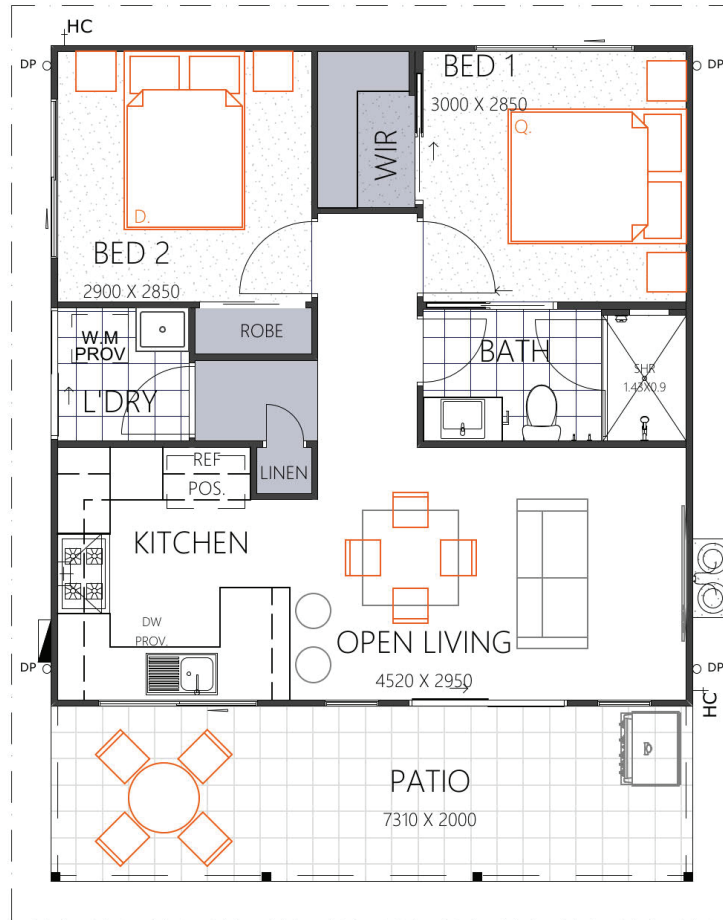


THE TIERRA 69

HOUSE SIZE (W x D): 8.21m x 10.43m
 SUITABLE FOR BLOCK SIZES:
 MIN LOT WIDTH: 11.21m
 MIN LOT DEPTH: 17.93m

ALTERNATE OPTION WITH WALK-IN-ROBE IN BED 1
 WITH THE TRADITIONAL FAÇADE



ROOM SIZES

Master Bedroom	3.0 x 2.8m	Open Living	4.5 x 2.9m
Bedroom 2	2.9 x 2.8m	Patio	5.7 x 3.5m

SPECIFICATIONS

Living	55.0m ²	5.9sq
Patio	14.7m ²	1.6sq
Total	69.7m²	7.5sq

DESIGN OPTIONS

- Standard Floor Plan
- Walk-in-Robe to Bedroom 1
- Kitchen & Laundry Swap

(07) 3886 4449

info@keibuildhomes.com.au
 www.keibuildhomes.com.au

