



THE *tierra* 69

Our small living solution.

The Tierra 69 boasts an impressive patio that brings in plenty of light to the front of the home. You enter into the open living space which sits across from the u-shaped kitchen with its own breakfast bar - a perfect spot for your morning coffee. There's plenty of bench space too with the sink facing out towards the patio. Towards the rear of the home are 2 good-sized bedrooms, each with their own built-in robe. The home also has a separate laundry, linen closet and 3-piece bathroom—making this design perfect for grannies.

FAÇADE OPTIONS



COASTAL



HERITAGE

(07) 3886 4449

info@keibuildhomes.com.au

www.keibuildhomes.com.au

THE

TIERRA 69

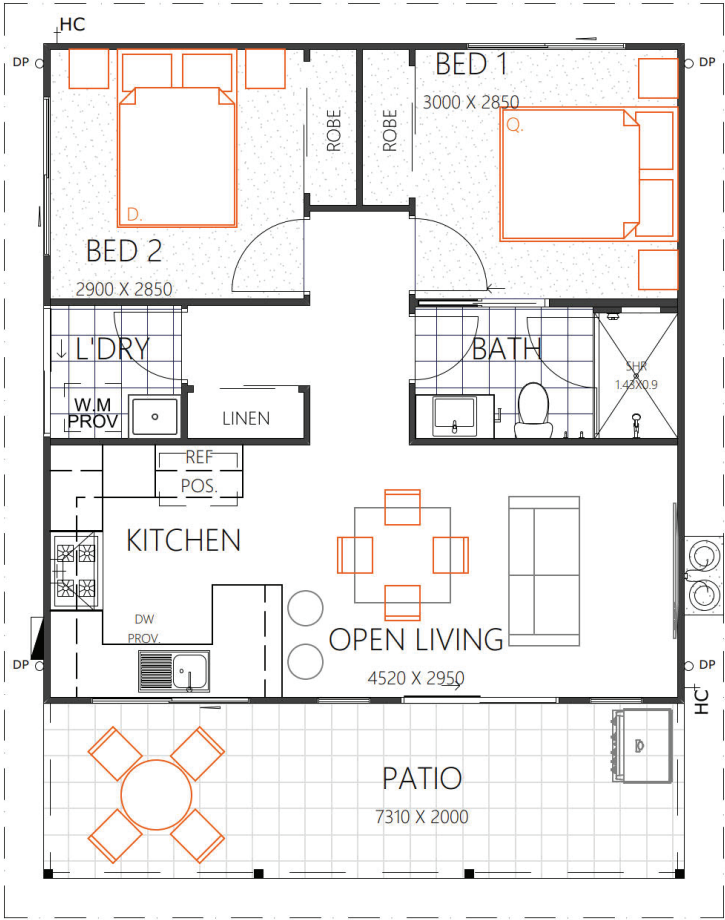
HOUSE SIZE (W x D): 8.21m x 10.43m

SUITABLE FOR BLOCK SIZES:

MIN LOT WIDTH: 11.21m

MIN LOT DEPTH: 17.93m

STANDARD FLOOR PLAN WITH THE TRADITIONAL FAÇADE



ROOM SIZES				SPECIFICATIONS			DESIGN OPTIONS
Master Bedroom	3.0 x 2.8m	Open Living	4.5 x 2.9m	Living	55.0m ²	5.9sq	• Standard Floor Plan
Bedroom 2	2.9 x 2.8m	Patio	5.7 x 3.5m	Patio	14.7m ²	1.6sq	• Walk-in-Robe to Bedroom 1
				Total	69.7m ²	7.5sq	• Kitchen & Laundry Swap

(07) 3886 4449

info@keibuildhomes.com.au

www.keibuildhomes.com.au

