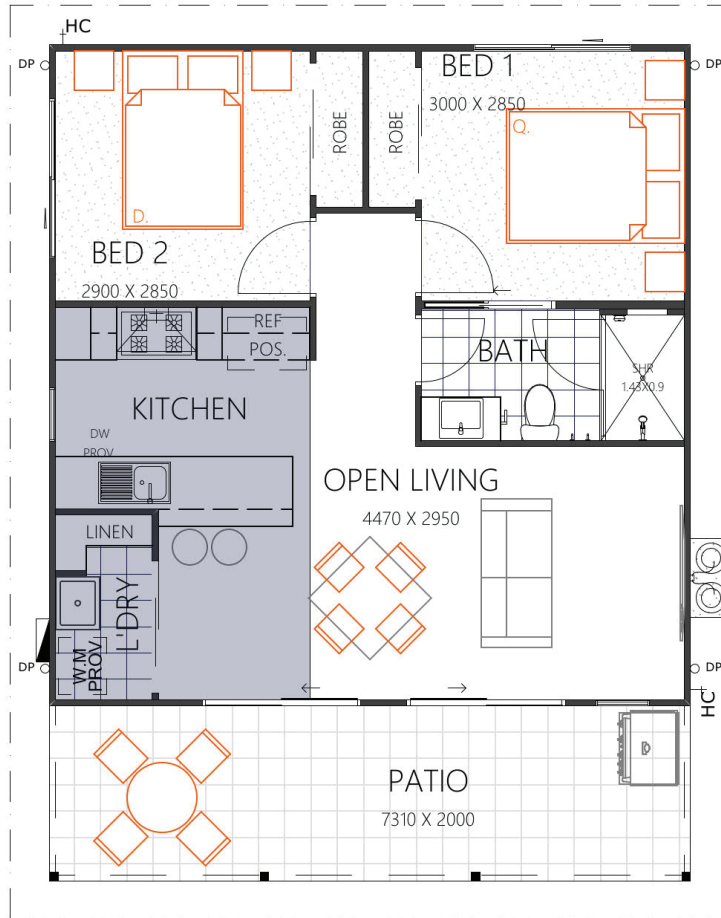


# THE TIERRA 69

HOUSE SIZE (W x D): 8.21m x 10.43m  
 SUITABLE FOR BLOCK SIZES:  
 MIN LOT WIDTH: 11.21m  
 MIN LOT DEPTH: 17.93m

ALTERNATE OPTION WITH KITCHEN & LAUNDRY SWAP  
 WITH THE TRADITIONAL FAÇADE



## ROOM SIZES

Master Bedroom	3.0 x 2.8m	Open Living	4.4 x 2.9m
Bedroom 2	2.9 x 2.8m	Patio	5.7 x 3.5m

## SPECIFICATIONS

Living	55.0m <sup>2</sup>	5.9sq
Patio	14.7m <sup>2</sup>	1.6sq
<b>Total</b>	<b>69.7m<sup>2</sup></b>	<b>7.5sq</b>

## DESIGN OPTIONS

- Standard Floor Plan
- Walk-in-Robe to Bedroom 1
- Kitchen & Laundry Swap

(07) 3886 4449

info@keibuildhomes.com.au  
 www.keibuildhomes.com.au

