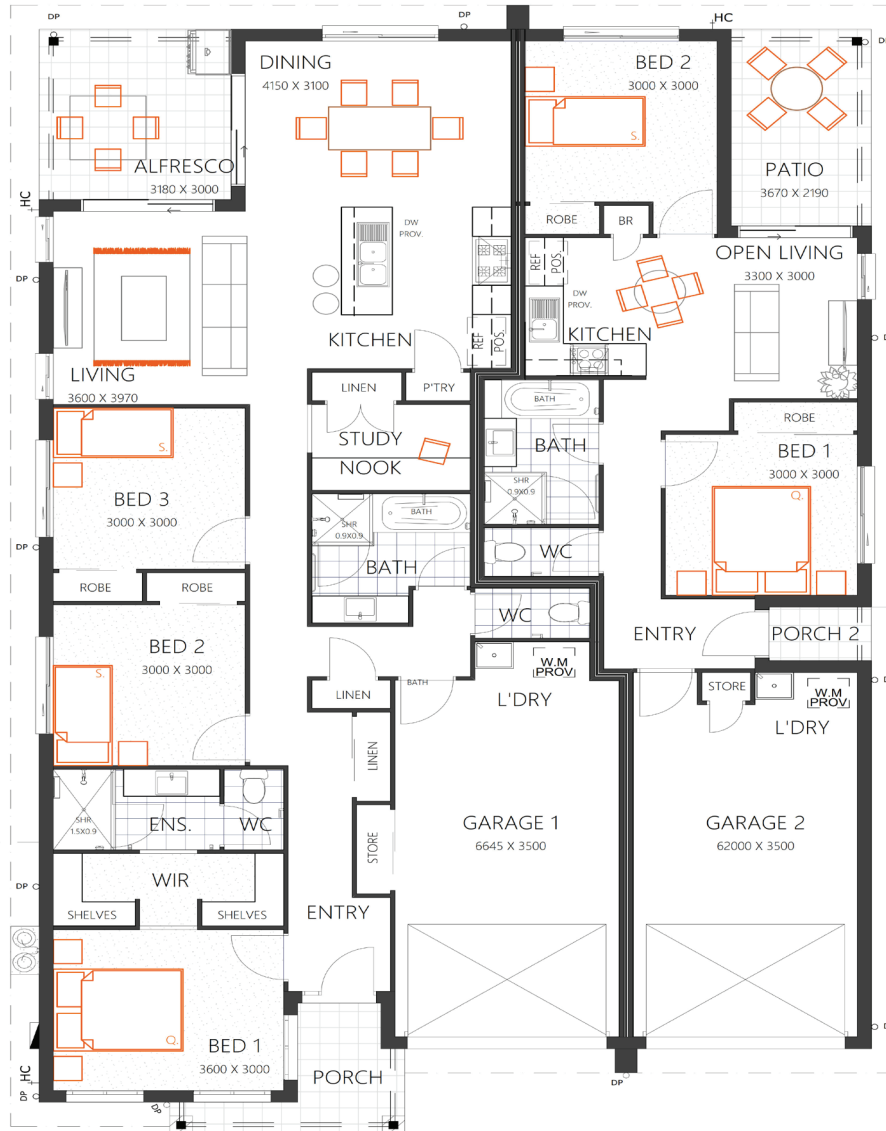


# THE MACQUARIE 254

HOUSE SIZE (W x D): 13.905m x 21.07m  
SUITABLE FOR BLOCK SIZES:  
MIN LOT WIDTH: 16.90m  
MIN LOT DEPTH: 30.5m



STANDARD FLOOR PLAN WITH THE HERITAGE FAÇADE



## SPECIFICATIONS - MAIN HOME

Living	122.0m <sup>2</sup>	13.1sq
Porch	4.7m <sup>2</sup>	0.5sq
Alfresco	9.5m <sup>2</sup>	1.0sq
Garage	26.6m <sup>2</sup>	2.9sq
<b>Total</b>	<b>162.8m<sup>2</sup></b>	<b>17.5sq</b>

## SPECIFICATIONS - GRANNY FLAT

Living	55.0m <sup>2</sup>	5.9sq
Porch	1.6m <sup>2</sup>	0.2sq
Alfresco	8.0m <sup>2</sup>	0.9sq
Garage	27.4m <sup>2</sup>	2.9sq
<b>Total</b>	<b>92m<sup>2</sup></b>	<b>9.9sq</b>

## DESIGN OPTIONS

- Standard Floor Plan
- Granny Flat Kitchen, Living, Bed 2 Swap
- Kitchen & Living Swap

**(07) 3886 4449**

info@keibuildhomes.com.au  
www.keibuildhomes.com.au



Dimensions shown are for the Heritage Façade. This document should only be used as a guide. Refer to working drawings for detailed specifications. Block sizes may vary depending on estate and council regulations. This floor plan is owned by Keibuild Homes and cannot be reproduced either wholly or in part, in any form. © Keibuild Homes 2019. QBCC Licence Number 15126405.