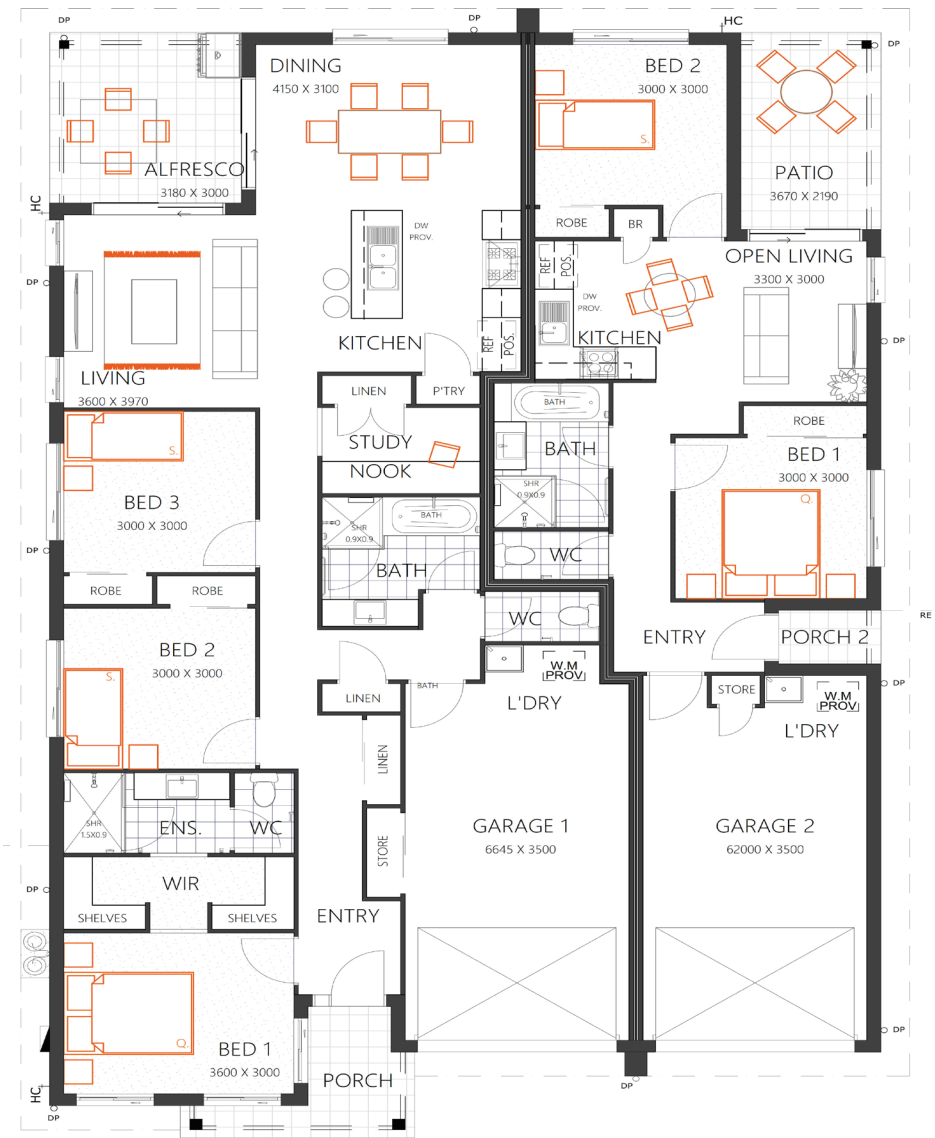


THE  
MACQUARIE 254

HOUSE SIZE (W x D): 13.905m x 21.07m  
SUITABLE FOR BLOCK SIZES:  
MIN LOT WIDTH: 16.90m  
MIN LOT DEPTH: 30.5m

STANDARD FLOOR PLAN WITH THE COASTAL FAÇADE



SPECIFICATIONS - MAIN HOME

Living	122.0m <sup>2</sup>	13.1sq
Porch	5.0m <sup>2</sup>	0.5sq
Alfresco	9.5m <sup>2</sup>	1.0sq
Garage	26.6m <sup>2</sup>	2.9sq
Total	163.1m <sup>2</sup>	17.5sq

SPECIFICATIONS - GRANNY FLAT

Living	55.0m <sup>2</sup>	5.9sq
Porch	1.6m <sup>2</sup>	0.2sq
Alfresco	8.0m <sup>2</sup>	0.9sq
Garage	27.4m <sup>2</sup>	2.9sq
Total	92m <sup>2</sup>	9.9sq

DESIGN OPTIONS

- Standard Floor Plan
- Granny Flat Kitchen, Living, Bed 2 Swap
- Kitchen & Living Swap

(07) 3886 4449  
info@keibuildhomes.com.au  
www.keibuildhomes.com.au



Dimensions shown are for the Coastal Façade. This document should only be used as a guide. Refer to working drawings for detailed specifications. Block sizes may vary depending on estate and council regulations. This floor plan is owned by Keibuild Homes and cannot be reproduced either wholly or in part, in any form. © Keibuild Homes 2019. QBCC Licence Number 15126405.