



THE *montana* 269

Perfect lifestyle home.

This spacious four bedroom home boasts three full bathrooms, three living areas and wonderful architectural detail. You'll be the envy of all your friends with a large kitchen island and butler style pantry that can accommodate even the largest dinner parties. The main living area also extends out to the alfresco through corner stacker doors, as does the rumpus at the rear of the home. Our signature drop zone in the garage is also a stand-out feature. Whether you're a growing family or simply upgrading, you'll feel at home in the Montana 269.

FAÇADE OPTIONS



COASTAL



HERITAGE

(07) 3886 4449

info@keibuildhomes.com.au

www.keibuildhomes.com.au

THE

MONTANA 269

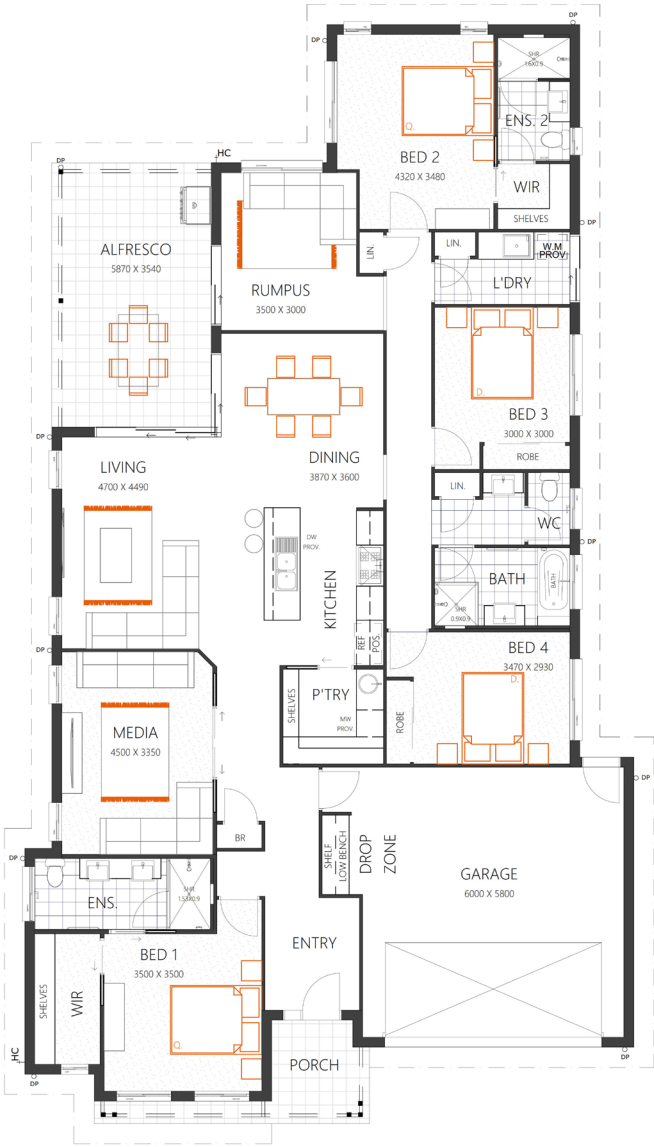
HOUSE SIZE (W x D): 14.42m x 25.31m

SUITABLE FOR BLOCK SIZES:

MIN LOT WIDTH: 17.42m

MIN LOT DEPTH: 32.81m

STANDARD FLOOR PLAN WITH THE TRADITIONAL FAÇADE



ROOM SIZES

Master Bedroom	3.5 x 3.5m	Family	4.7 x 4.4m
Bedroom 2	4.3 x 3.4m	Dining	3.8 x 3.6m
Bedroom 3	3.0 x 3.0m	Kids Retreat	3.5 x 3.0m
Bedroom 4	3.4 x 2.9m	Alfresco	5.8 x 3.5m
Media Room	4.5 x 3.3m	Garage	6.0 x 5.8m

SPECIFICATIONS

Living	200.4m²	21.6sq
Porch	6.7m²	0.8sq
Alfresco	20.8m²	2.2sq
Garage	41.2m²	4.4sq
Total	269.1m²	29.0sq

DESIGN OPTIONS

- Standard Floor Plan
- No Rumpus
- Master to Rear + Media to Front
- Bedroom 3 & Rumpus Swap

(07) 3886 4449

info@keibuildhomes.com.au

www.keibuildhomes.com.au



Dimensions shown are for the Traditional Façade. This document should only be used as a guide. Refer to working drawings for detailed specifications. Block sizes may vary depending on estate and council regulations. This floor plan is owned by Keibuild Homes and cannot be reproduced either wholly or in part, in any form. © Keibuild Homes 2019. QBCC Licence Number 15126405.