

TRADITIONAL FAÇADE



THE *indie* 209

The home that has it all.

Designed to fit on a traditional suburban block, this floor plan is perfectly balanced with bedrooms on both sides of the home. As you walk through the home, you'll find 4 bedrooms, 2 bathrooms, a study nook and ample storage throughout - making it perfect for growing families. Towards the rear is an open-plan living and dining area, adjoining a spacious kitchen with walk-in pantry. A media room is also tucked away to the side - which could also be used as a parent's or child's retreat. This is a home that gives you the flexibility and space needed to grow.

FAÇADE OPTIONS



(07) 3886 4449

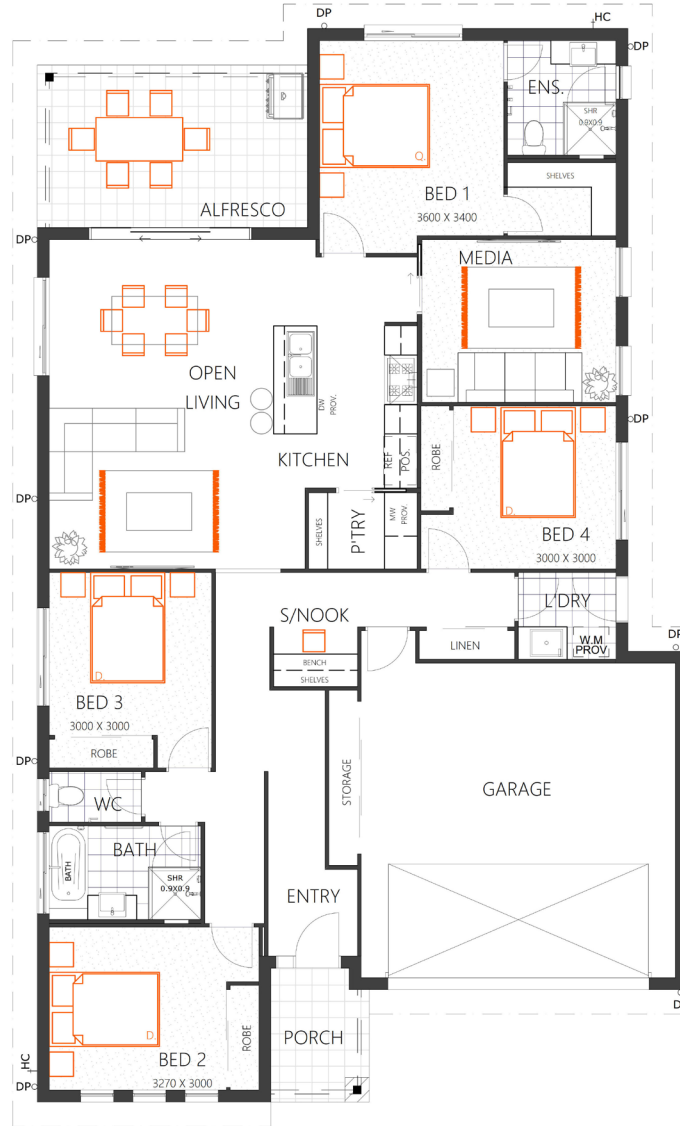
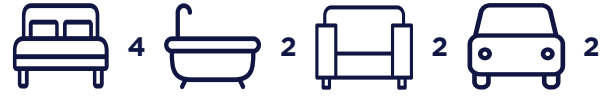
info@keibuildhomes.com.au
www.keibuildhomes.com.au

KEIBUILD HOMES
UNLOCK YOUR DREAM

THE INDIE 209

HOUSE SIZE (W x D): 12.45m x 20.69m
 SUITABLE FOR BLOCK SIZES:
 MIN LOT WIDTH: 14.0m
 MIN LOT DEPTH: 25.0m

STANDARD FLOOR PLAN WITH THE TRADITIONAL FAÇADE



ROOM SIZES

Master Bedroom	3.6 x 3.4m	Open Living	6.0 x 4.1m
Bedroom 2	3.2 x 3.0m	Media	3.5 x 3.0m
Bedroom 3	3.0 x 3.0m	Alfresco	4.9 x 3.0m
Bedroom 4	3.0 x 3.0m	Garage	5.8 x 5.8m
Study Nook	1.4 x 1.1m		

SPECIFICATIONS

Living	149.9m ²	16.1sq
Porch	4.3m ²	0.5sq
Alfresco	15.0m ²	1.6sq
Garage	40.1m ²	4.3m
Total	209.3m²	22.5sq

DESIGN OPTIONS

- Standard Floor Plan
- Master Bedroom & Media Swap
- Kitchen Flip with Study Nook
- Alternate Kitchen Design

(07) 3886 4449

info@keibuildhomes.com.au
 www.keibuildhomes.com.au

