



## THE *fraser* 190

Timeless narrow lot design.

Making great use of a narrow block, this design has perfect flow from the entry right through to the alfresco. The master bedroom is tucked away at the back of the home and has it's own generous ensuite and walk-in robe with shelving. The open plan living space and kitchen has loads of storage with a breakfast bar that can easily accommodate the whole family. With 5 bedrooms, this design gives everyone their own private space. The fifth bedroom even opens onto it's own front porch which can be used as its own sanctuary or an office or work space.

## FAÇADE OPTIONS



COASTAL



HÉRITAGE

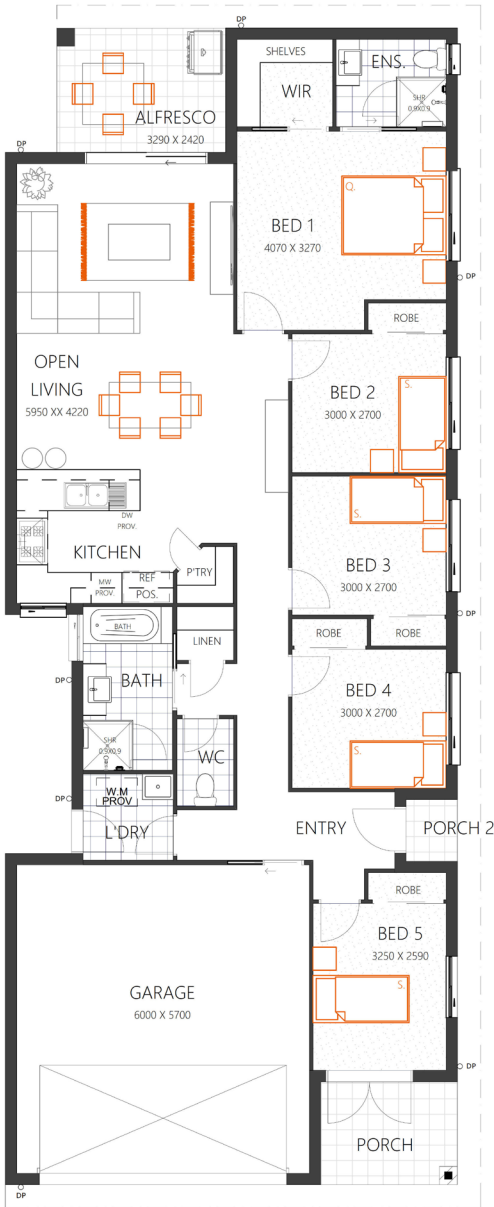
**(07) 3886 4449**

[info@keibuildhomes.com.au](mailto:info@keibuildhomes.com.au)  
[www.keibuildhomes.com.au](http://www.keibuildhomes.com.au)

THE  
FRASER 190

HOUSE SIZE (W x D): 9.25m x 23.4m  
SUITABLE FOR BLOCK SIZES:  
MIN LOT WIDTH: 11.0m  
MIN LOT DEPTH: 30.9m

STANDARD FLOOR PLAN WITH THE TRADITIONAL FAÇADE



ROOM SIZES

Master Bedroom	4.0 x 3.2m	Open Living	5.9 x 4.2m
Bedroom 2	3.0 x 2.7m	Alfresco	3.2 x 2.4m
Bedroom 3	3.0 x 2.7m	Garage	6.0 x 5.7m
Bedroom 4	3.0 x 2.7m		
Bedroom 5	3.2 x 2.5m		

SPECIFICATIONS

Living	136.5m <sup>2</sup>	14.7sq
Porches	6.5m <sup>2</sup>	0.7sq
Alfresco	8.0m <sup>2</sup>	0.9sq
Garage	38.2m <sup>2</sup>	4.1m
Total	189.2m <sup>2</sup>	20.4sq

DESIGN OPTIONS

- Standard Floor Plan
- 4 Bedrooms with Study
- Bathroom Swap

(07) 3886 4449  
info@keibuildhomes.com.au  
www.keibuildhomes.com.au



Dimensions shown are for the Traditional Façade. This document should only be used as a guide. Refer to working drawings for detailed specifications. Block sizes may vary depending on estate and council regulations. This floor plan is owned by Keibuild Homes and cannot be reproduced either wholly or in part, in any form. © Keibuild Homes 2019. QBCC Licence Number 15126405.