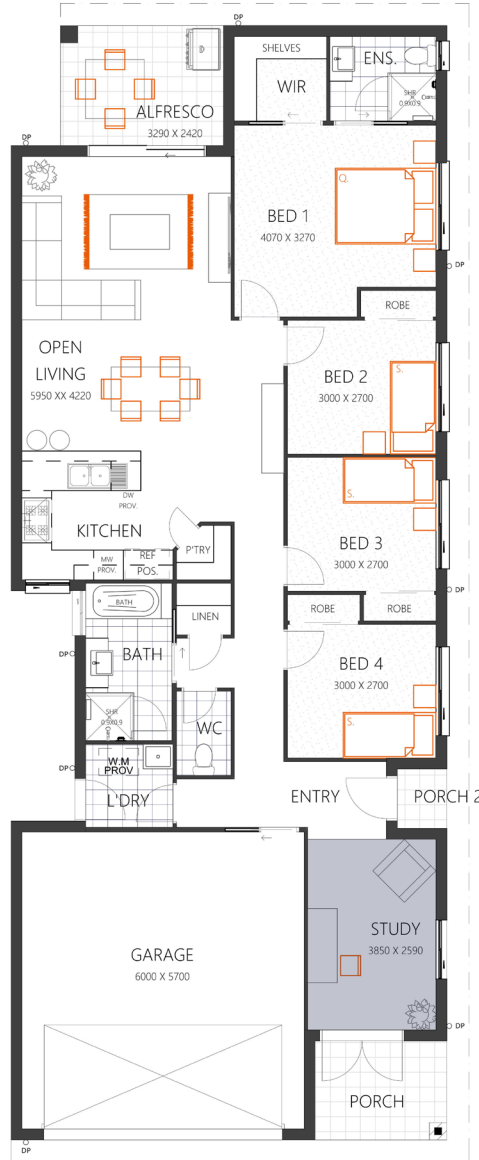
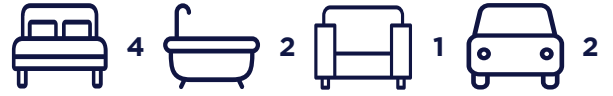


THE FRASER 190

HOUSE SIZE (W x D): 9.25m x 23.4m
 SUITABLE FOR BLOCK SIZES:
 MIN LOT WIDTH: 11.0m
 MIN LOT DEPTH: 30.9m

ALTERNATE OPTION WITH 4 BEDROOMS WITH STUDY
 WITH THE TRADITIONAL FAÇADE



ROOM SIZES

Master Bedroom	4.0 x 3.2m	Open Living	5.9 x 4.2m
Bedroom 2	3.0 x 2.7m	Study Nook	3.8 x 2.5m
Bedroom 3	3.0 x 2.7m	Alfresco	3.2 x 2.4m
Bedroom 4	3.0 x 2.7m	Garage	6.0 x 5.7m

SPECIFICATIONS

Living	136.5m ²	14.7sq
Porches	6.5m ²	0.7sq
Alfresco	8.0m ²	0.9sq
Garage	38.2m ²	4.1m
Total	189.2m²	20.4sq

DESIGN OPTIONS

- Standard Floor Plan
- 4 Bedrooms with Study
- Bathroom Swap

(07) 3886 4449

info@keibuildhomes.com.au
 www.keibuildhomes.com.au

