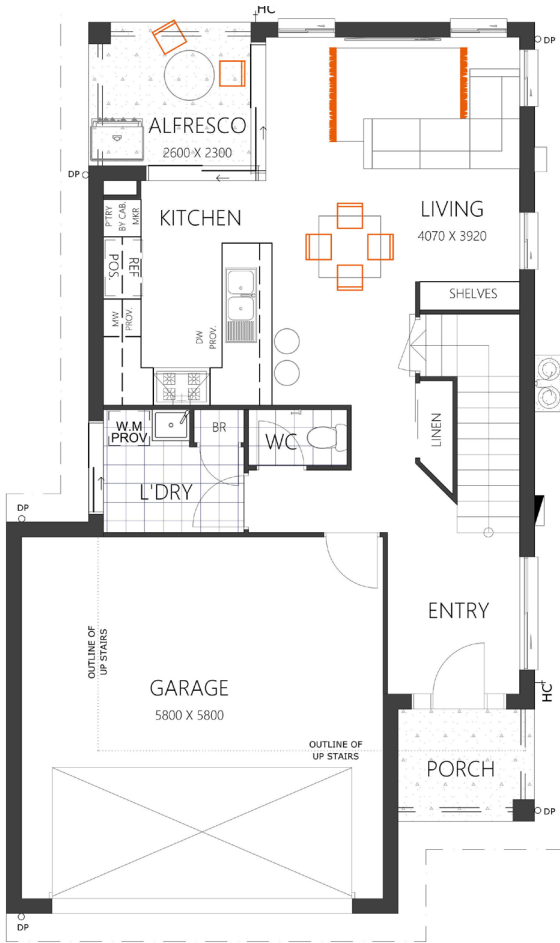


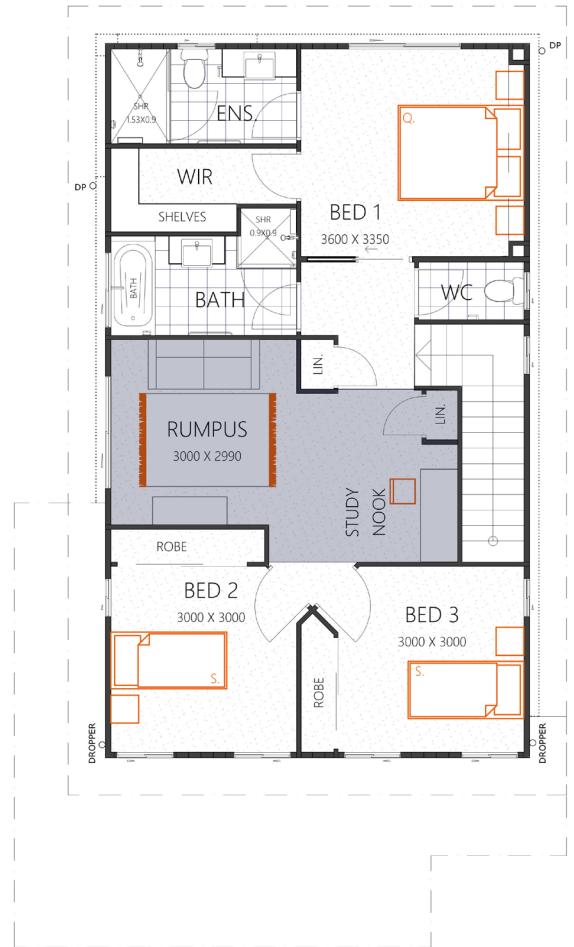
THE DAYDREAM 181

HOUSE SIZE (W x D): 8.92m x 15.19m
 SUITABLE FOR BLOCK SIZES:
 MIN LOT WIDTH: 10.17m
 MIN LOT DEPTH: 19.19m

ALTERNATE OPTION WITH 3 BEDROOMS WITH RUMPUS
 WITH THE TRADITIONAL FAÇADE



GROUND FLOOR



FIRST FLOOR

ROOM SIZES

Master Bedroom	3.6 x 3.3m	Open Living	4.0 x 3.9m
Bedroom 2	3.0 x 3.0m	Alfresco	2.6 x 2.3m
Bedroom 3	3.0 x 3.0m	Garage	5.8 x 5.8m
Rumpus	3.0 x 2.9m		

SPECIFICATIONS

Total Living	134.1m ²	14.4sq
Porch	3.9m ²	0.4sq
Alfresco	6.0m ²	0.6sq
Garage	37.6m ²	4.1sq
Total	181.6m²	19.5q

DESIGN OPTIONS

- Standard Floor Plan
- 3 Bedroom + Rumpus
- Kitchen & Living Swap

(07) 3886 4449
 info@keibuildhomes.com.au
 www.keibuildhomes.com.au



Dimensions shown are for the Traditional Façade. This document should only be used as a guide. Refer to working drawings for detailed specifications. Block sizes may vary depending on estate and council regulations. This floor plan is owned by Keibuild Homes and cannot be reproduced either wholly or in part, in any form. © Keibuild Homes 2019. QBCC Licence Number 15126405.