



THE *juno* 187

Everything your family needs and more!

There is space for your family grow in this budget-friendly four bedroom home, which even includes a spacious study nook just off the entry hall. The kitchen is the central hub of the home with a long island bench and a view to the backyard—even a walk-in pantry that is only steps from the garage so you can easily unload your groceries. All bedrooms are tucked away for privacy from the main living area. Venturing to the back of the home you arrive at the master bedroom with its very own walk-in robe and master ensuite—the perfect place for some quiet time to relax.

FAÇADE OPTIONS



COASTAL



HERITAGE

(07) 3886 4449

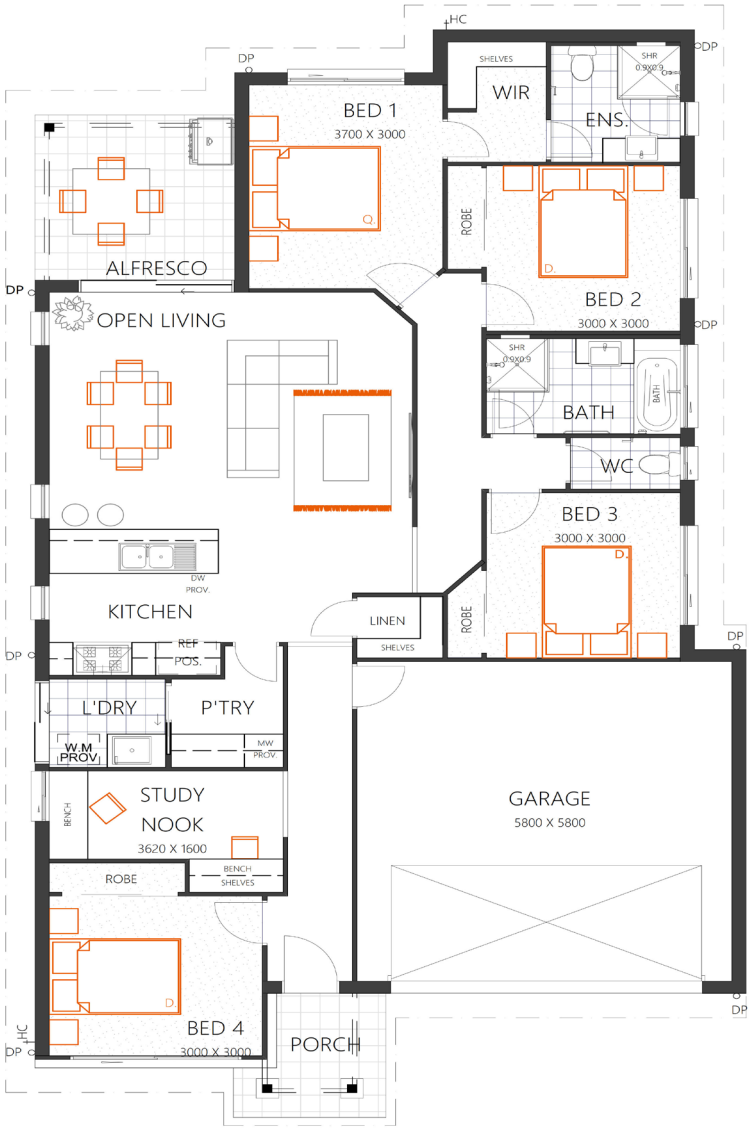
info@keibuildhomes.com.au
www.keibuildhomes.com.au

KEIBUILD HOMES
UNLOCK YOUR DREAM

THE
JUNO 187

HOUSE SIZE (W x D): 11.45m x 20.355m
SUITABLE FOR BLOCK SIZES:
MIN LOT WIDTH: 12.5m
MIN LOT DEPTH: 25.0m

STANDARD FLOOR PLAN WITH THE TRADITIONAL FAÇADE



ROOM SIZES				SPECIFICATIONS			DESIGN OPTIONS
Master Bedroom	3.7 x 3.0m	Open Living	5.6 x 4.3m	Living	134.9m ²	14.5sq	• Standard Floor Plan
Bedroom 2	3.0 x 3.0m	Study Nook	3.6 x 1.6m	Porch	4.4m ²	0.5sq	• Media + Bedroom 4 to Front
Bedroom 3	3.0 x 3.0m	Alfresco	3.0 x 3.0m	Alfresco	9.3m ²	1.0sq	• Media to Front, Kitchen Flip + Bedroom Changes
Bedroom 4	3.0 x 3.0m	Garage	5.8 x 5.8m	Garage	37.2m ²	4.0m	• Master & Media to Front + Kitchen Swap
Total					185.8m ²	20sq	

(07) 3886 4449
info@keibuildhomes.com.au
www.keibuildhomes.com.au



Dimensions shown are for the Traditional Façade. This document should only be used as a guide. Refer to working drawings for detailed specifications. Block sizes may vary depending on estate and council regulations. This floor plan is owned by Keibuild Homes and cannot be reproduced either wholly or in part, in any form. © Keibuild Homes 2019. QBCC Licence Number 15126405.